

30" DUAL ZONE WINE COLUMN WITH STAINLESS GLASS DOOR

TR-30DZW-R/L-SG-C

TR-30DZW-R-SG-C (Right hinged)

TR-30DZW-L-SG-C (Left hinged)

FEATURES

- Environmentally friendly, R600a hydrocarbon refrigerant that improves performance and efficiency while ensuring quiet operation.
- Industry exclusive, 300-series stainless steel interior and exterior.
- All stainless steel, beautifully crafted proud hinges pass True's rigorous one million door opening test.
- Beautifully crafted solid stainless steel door with 120° stay-open feature and ergonomically designed, robust, tubular handle.
- Commercially inspired lift-up grill on top of the unit with toe kick that complements the look of True's undercounter units.
- Patented TruLumina® LED lighting gently illuminates your product and allows you to choose from 14 different color options with the push of a button.
- Low-E, double pane, UV tinted glass.
- Intuitive True Precision® Control and readout provides digital accuracy and easy operation.
- 2 independent zones with dual evaporators that can be adjusted from 40°F (4.4°C) to 65°F (18.3°C).
- Full extension wine racks with unfinished cherry fronts that cradle your wine and prevent vibration.
- Display shelf that proudly displays your collection along with additional storage behind display.
- Optional Lock available – must be ordered from factory.
- NSF/ANSI Standard 7 compliant for packaged product.

ORGANIZATION

- 15 full-extension, soft-close wine racks – 150 bottles.



BUILD YOUR TRUE

Customize your True with a variety of finish and hardware options at true-residential.com/custom.



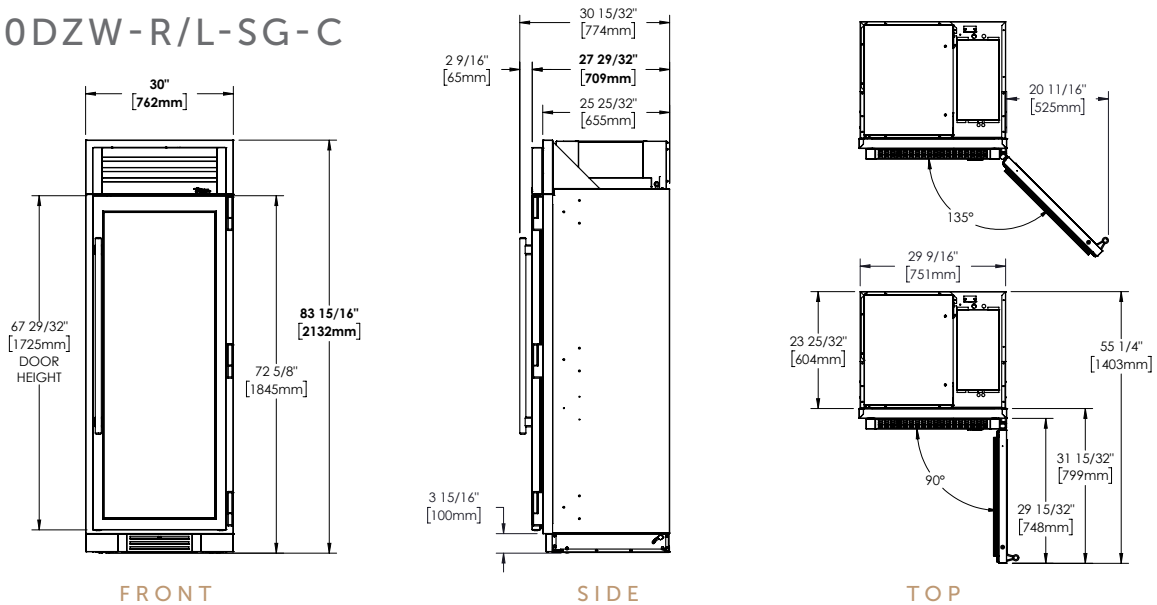
TR-30DZW-R-SG-C

SPECIFICATIONS

Dimensions (w x h x d)	30" x 84" x 24"
Cutout Dimensions (w x h x d)	
Flush Opening	30¾" x 84¼" x 26"
Standard Opening	29¾" x 84" x 24"
Capacity (cu. ft.)	20.6  x 150
Temperature Range	2 independent zones that can be adjusted from 40°F (4.4°C) to 65°F (18.3°C).
Weight (lbs.)	TBD
Voltage	115/60/1  115/60/1 NEMA-5-15R
Amps	1.2
Annual Energy Consumption (kwh)	400
Power Cord Length (ft.)	9
Energy Star Rated	—

30" DUAL ZONE WINE COLUMN WITH STAINLESS GLASS DOOR

TR-30DZW-R/L-SG-C



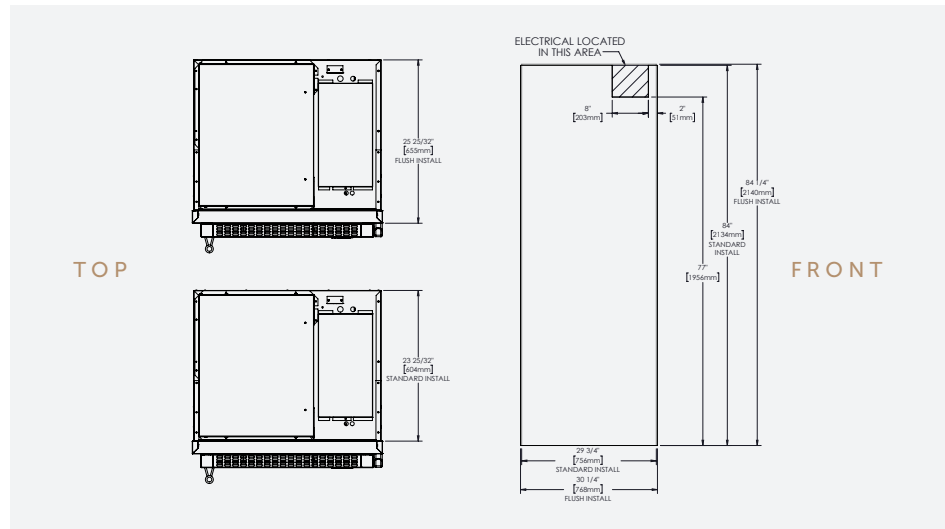
OPENING DIMENSIONS

FLUSH OPENING

WIDTH	HEIGHT	DEPTH
30 3/4"	84 1/4"	26"

STANDARD OPENING

WIDTH	HEIGHT	DEPTH
29 3/4"	84"	24"



MODEL OPTIONS

MODEL	FINISH
TR-30DZW-R-SG-C	Stainless glass door right-hinged
TR-30DZW-L-SG-C	Stainless glass door left-hinged

ACCESSORIES (OPTIONAL)

- Joining kit
- Side panel(s)
- Full size anti-condensation pad
- Optional Lock – must be ordered from factory.

WARRANTY

- 3 year full (parts & labor)
- 6 year sealed system (parts & labor)
- 7–12 year (parts only – sealed system on registered products)